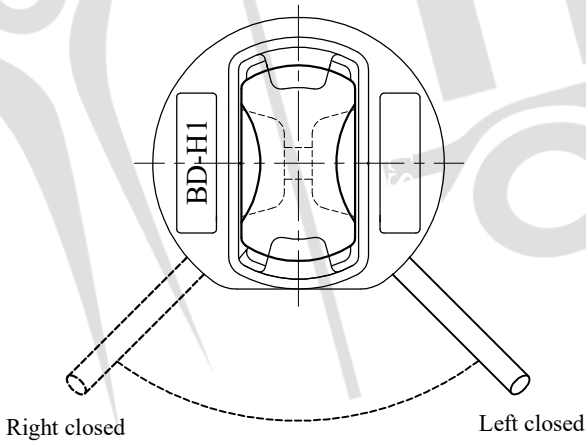
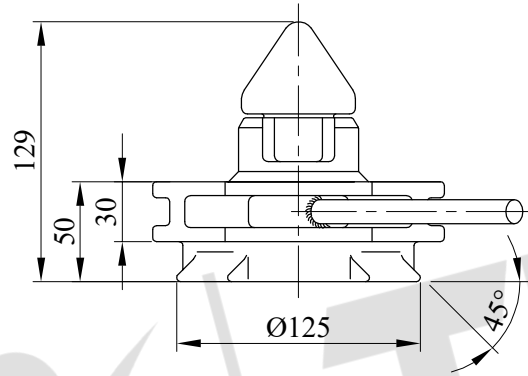


# BREECH BASE TWISTLOCK

BD-H1/L  
BD-H1/R




LOADS	SHEAR [KN]	TENSION [KN]
BREAKING LOAD	420	500
SAFE WORKING LOAD	210	250

TOTAL WEIGHT	5.5 KG
MATERIAL	HEAT TREATABLE STEEL
FINISH	HOT DIP GALVANISED

## NOTICE:

\* TRILEX TREYLER İç ve Dış Tic. Ltd. Şti. has adopted the principle of continuous improvement of its products  
\* TRILEX TREYLER reserves the right to make changes in technical dimensions and features without prior notice  
\* So; this technical drawing is given to be added to the contract annex and it is for only informational purposes

	Name	Date & Signature	 <b>TRILEX TREYLER İç ve Dış Tic. Ltd. Şti.</b> <a href="http://www.trilex.com.tr">www.trilex.com.tr</a> <a href="http://www.trilextreyler.com">www.trilextreyler.com</a> <a href="mailto:info@trilex.com.tr">info@trilex.com.tr</a> +90 530 610 1432 / +90 332 239 1860
Designer	A.TAŞDELEN		
Control	A.ADIYAMAN		
Approval	O.ADIYAMAN		
Type Approval	e5*2018/858*00075*00		
Q.M.S. / No.	ISO 9001:2015 / QMS-0104558		
Product Code	TX-SA-SBBT		
Product Name	Breech Base Bottom Twist-lock		
All rights of this picture belong to <b>TRILEX TREYLER</b> company. So, it can not be reproduced, copied and published without permission			